



## Short communication

## Computational fluid dynamics vs. inverse dynamics methods to determine passive drag in two breaststroke glide positions

L. Costa<sup>a,b</sup>, V.R. Mantha<sup>c,d,e</sup>, A.J. Silva<sup>d,e</sup>, R.J. Fernandes<sup>a,b</sup>, D.A. Marinho<sup>d,h</sup>, J.P. Vilas-Boas<sup>a,b</sup>, L. Machado<sup>a,b</sup>, A. Rouboa<sup>c,f,g,\*</sup><sup>a</sup> Centre of Research, Education, Innovation and Intervention in Sports (CIFI2D), Faculty of Sport, University of Porto, Porto, Portugal<sup>b</sup> Porto Biomechanics Laboratory (LABIOMEPE) University of Porto, Porto, Portugal<sup>c</sup> University of Trás-os-Montes-e-Alto Douro, Engineering Department (UTAD), Vila Real, Portugal<sup>d</sup> Research Centre in Sports, Health and Human Development (CIDESD), Vila Real, Portugal<sup>e</sup> University of Trás-os-Montes and Alto Douro, Department of Sport Sciences, Exercise and Health (UTAD), Vila Real, Portugal<sup>f</sup> CIENER-INEGI, Faculty of Engineering of University of Porto, Porto, Portugal<sup>g</sup> University of Pennsylvania, Department of Mechanical Engineering and Applied Mechanics (UPENN), Main Building, 33 Walnut Street, Philadelphia, PA 19104-6391, USA<sup>h</sup> University of Beira Interior, Department of Sport Sciences, Covilhã, Portugal

## ARTICLE INFO

## Article history:

Accepted 7 March 2015

## Keywords:

Computational fluid dynamics (CFD)

Inverse dynamics

Breaststroke

Passive drag

Gliding position

## ABSTRACT

Computational fluid dynamics (CFD) plays an important role to quantify, understand and “observe” the water movements around the human body and its effects on drag (D). We aimed to investigate the flow effects around the swimmer and to compare the drag and drag coefficient ( $C_D$ ) values obtained from experiments (using cable velocimetry in a swimming pool) with those of CFD simulations for the two ventral gliding positions assumed during the breaststroke underwater cycle (with shoulders flexed and upper limbs extended above the head-GP1; with shoulders in neutral position and upper limbs extended along the trunk-GP2). Six well-trained breaststroke male swimmers (with reasonable homogeneity of body characteristics) participated in the experimental tests; afterwards a 3D swimmer model was created to fit within the limits of the sample body size profile. The standard  $k-\epsilon$  turbulent model was used to simulate the fluid flow around the swimmer model. Velocity ranged from 1.30 to 1.70 m/s for GP1 and 1.10 to 1.50 m/s for GP2. Values found for GP1 and GP2 were lower for CFD than experimental ones. Nevertheless, both CFD and experimental drag/drag coefficient values displayed a tendency to jointly increase/decrease with velocity, except for GP2  $C_D$  where CFD and experimental values display opposite tendencies. Results suggest that CFD values obtained by single model approaches should be considered with caution due to small body shape and dimension differences to real swimmers. For better accuracy of CFD studies, realistic individual 3D models of swimmers are required, and specific kinematics respected.

© 2015 Elsevier Ltd. All rights reserved.

## 1. Introduction

Swimming performance is determined by the combined effect of propulsion, drag and skill (Chatard et al., 1990a; D'Acquisto et al., 1988). Chatard et al. (1990b) indicated passive drag as a reasonable predictor of swimming performance especially during the underwater glide phases of the starts and turns. These phases are an important component of the overall swimming during short distance events. Indeed, the total swimming event time can be divided into start, swim, turn and finish partial times (Haljand and

Saagpak, 1984), with the starts and turns having a significant importance (Guimarães and Hay, 1985; Vilas-Boas and Fernandes, 2003) to reduce the time race. For the particular case of the 200 m breaststroke event the start might be responsible for 0.5% to ~11% of the total time and the turns for ~39% (Tayer and Hay, 1984). Lyttle et al. (1998) conducted a race analysis, dividing the start section into four phases: leave the block, flight, underwater and above water phases. Complementarily, in breaststroke events, the underwater phase can be divided into four phases (Counsilman, 1986; Maglisho, 2003): (i) ventral position with upper limbs extended above the head and shoulder flexed, with lower limbs together (first gliding position, GP1); (ii) upper limbs action; (iii) ventral position with upper limbs extended along the trunk with lower limbs stretch and together (second gliding position, GP2);

\* Correspondence to: Engineering Quinta de Prados, Apartado 1013, 5001-801 Vila Real, Portugal.

E-mail address: [rouboa@seas.upenn.edu](mailto:rouboa@seas.upenn.edu) (A. Rouboa).<sup>†</sup> Tel.: +1 215 898 7246.

and (iv) recovery phase followed by the lower limbs action toward the surface.

In these two gliding positions drag and drag coefficient was only compared by Vilas-Boas et al. (2010) at a common mean velocity of 1.37 m/s using inverse dynamics and an analytic/experimental approach based on acceleration and inertia. Other drag gliding related studies were mostly either experimental or numerical, using towing devices (Kolmogorov et al., 1997; Lytle et al., 2000; Toussaint et al., 2004) or CFD simulations (Marinho et al., 2009, 2011; Sato and Hino, 2010; Costa et al., 2011; Popa et al., 2011). Experimental approaches may be affected by several drawbacks, both related to the experimental setup and the ability of the swimmer to maintain a stable gliding position throughout time (Bixler et al., 1996). On the other hand, computer simulations seem to rely on the appropriateness of the models and assumptions. Most of the CFD studies in swimming using non-realistic (geometric shapes), quasi-realistic (human body or segment shapes artificially created) and realistic (3D image of real body or segment) models try to generalise findings to the overall swimmers population. Nevertheless, a question remains: are the numerical conclusions, even if extracted from realistic or quasi-realistic models, able to be generalised, disregarding small differences in body dimensions and shape? Nowadays, with the accessibility of 3D body scanners, CFD related researchers tend to favour realistic and personalised models to test the effects of detailed changes (e.g. in swimsuits). The rationale for this tendency seems mostly determined by scientific beliefs than by scientific facts as, to the best of our knowledge, no previous studies have analysed the issue above.

Our purpose was to analyse whether passive drag values obtained during GP1 and GP2 may be accurately predicted through CFD. A quasi-realistic model with marginally coherent body dimensions was used throughout a range of ecologically-based selected velocities. It was hypothesised that the lack of personalised models and specific gliding kinematics may compromise the validity of the model results. In addition, we also aimed to compare the drag and  $C_D$  values of either GP.

## 2. Methods

### 2.1. Experimental approach

Six well-trained male breaststroke swimmers volunteered to participate and freely signed a written informed consent. The study was approved by the host institution's ethical committee. Testing sessions were conducted in a 25 m pool, 1.90 m deep, with water temperature maintained at  $27.5 \pm 0.5$  °C. The characteristics of the sample are presented in Table 1. The body cross sectional area was determined through planimetry, using scaled photographs of the subjects, as described in Vilas-Boas et al. (2010).

The drag was assessed using inverse dynamics based upon inertia and acceleration, obtained through numerical differentiating of the velocity to time ( $v(t)$ ) curve of each glide phase, acquired by a swim-metre (Swimsensor, Porto University, Portugal; for methodological details see Vilas-Boas et al. (2010)). The accuracy of this swim-metre was previously tested for swimming speed fluctuation patterns presenting mean  $\pm$  SD correlation coefficient values of  $0.96 \pm 0.028$  for hip vs. image-based hip kinematics, and  $0.88 \pm 0.053$  for hip vs. centre of mass (CM) kinematics (Lima et al., 2006). Each swimmer performed three repetitions of the breaststroke underwater cycle at maximal intensity, with a 2 min rest interval between trials. During data processing,  $v(t)$  curve of each swimmer's best trial was chosen (trial with the better definition of the different gliding phases and with

lower noise). It was filtered with a 3 Hz low-pass 4th order Butterworth filter and then numerically differentiated to obtain acceleration ( $a(t)$ ). The velocities common to all swimmers were: 1.3, 1.4, 1.5, 1.6, and 1.7 m/s in GP1 and 1.1, 1.2, 1.3, 1.4, and 1.5 m/s in GP2.

The drag force was computed using the following expression:

$$D = m a \quad (1)$$

where  $m$  is the swimmer's body mass and  $a$  the swimmer's acceleration.

To quantify the drag coefficient, the following equation was used:

$$C_D = \frac{2D}{\rho S v^2} \quad (2)$$

where  $C_D$  is the drag coefficient,  $\rho$  is the water density ( $998.2 \text{ kg/m}^3$ ),  $S$  is the swimmer's body cross sectional area while  $D$  and  $v$  are as referred.

## 3. Computational fluid dynamics approach

### 3.1. Three-dimensional model

To obtain the surface geometry of the human body, a 3D body scan of a swimmer within the limits of the sample body size profile was performed. Then, it was further processed in AutoCAD<sup>®</sup> and GAMBIT<sup>®</sup> (Fig. 1) to finally generate the meshed model, which was imported into FLUENT<sup>®</sup> (ANSYS<sup>®</sup>, Hanover, USA) for performing CFD simulations.

### 3.2. CFD simulation

The CFD simulation was performed on the model fixed in a horizontal position at an angle of attack of  $0^\circ$  (defined between a horizontal line and a line drawn from the tip of the middle finger or the vertex head, depending on the upper limbs position, to the ankle joint). The height of model was 1.87 m, with head, chest and waist circumferences of 0.57, 1.04 and 0.85 m, respectively. The swimmer model was positioned at a depth of 0.90 m from the water surface in rectangular computational domains with 2.50 m width, 1.80 m depth and 8.00 m in pool length for GP1 and 7.55 m for GP2. The remaining model and water conditions are presented in Table 2.

### 3.3. Boundary conditions

The simulation was carried out on the meshed model, consisting of 1 million tetrahedral cells, with a uniform velocity ( $U_0$  – with only the  $x$ -coordinate direction) equal to 1.30, 1.40, 1.50, 1.60 and 1.70 m/s for GP1 and 1.10, 1.20, 1.30, 1.40 and 1.50 m/s for GP2. It was ensured that the CFD model would provide accurate results, particularly by refining the grid in areas of high velocity and pressure gradients.

### 3.4. CFD model

The numerical simulation of the fluid flow around the 3D swimmer model was implemented into the ANSYS FLUENT<sup>®</sup> CFD software. As the current study focused on the global drag and not on the flow turbulences, the closure problem of the turbulence modelling was solved using  $k$ - $\epsilon$  model with appropriate wall functions (Bixler and Riewald, 2002; Rouboa et al., 2006). This model is extensively applied and validated in various industrial applications (Raiesi et al., 2011) and is realistic for free-shear layer flows with relatively small pressure gradients (Bardina, 1997). A second order discretization scheme was applied to limit numerical dissipation. The convergence criterion of  $10^{-6}$  has proved sufficient for this study.

**Table 1**  
Characteristics of the sample (mean;  $n=6$ ).

| Age (years old) | Height (m)      | Body mass (kg)  | Body cross sectional area (cm <sup>2</sup> ) |                     |
|-----------------|-----------------|-----------------|--|---------------------|
|                 |                 |                 | GP1  | GP2                 |
| 18.2 $\pm$ 4.0  | 1.78 $\pm$ 0.09 | 64.4 $\pm$ 11.4 | 759.95 $\pm$ 124.12                          | 814.46 $\pm$ 111.23 |

3.5. Statistical analysis

To cheque the level of agreement between the values of passive drag by experimental and CFD methods we used the Bland and Altman (1996) plots with Confidence Index (CI) of 95%. All statistical tests were made in MedCalc 9.3.2.0 (MedCalc Software, Mariakerke, Belgium).

4. Results

The results obtained in GP1 and GP2 for both drag and  $C_D$  values are presented in Fig. 2.

By using the above-referred methods, data evidences that drag increases with velocity in both glide positions, displaying a very strong correlation between both drag determination methods in GP1 ( $R=0.95$ ,  $p=0.01$ ) and strong correlation for GP2 ( $R=0.87$ ,  $p=0.05$ ). Drag values derived experimentally were higher than those obtained from the CFD method. The difference of the drag values between both methods was approximately constant for the whole range of studied velocities (Figs. 3a and 4a). All points are dispersed within the limits of  $\pm 1.96$  SD from the mean (Figs. 3b and 4b).

For GP1 the  $C_D$  results showed a very strong correlation between both methods ( $R=0.93$ ,  $p=0.018$ , Fig. 3c). All points are dispersed within the limits of  $\pm 1.96$  SD around the mean (Fig. 3d) and the difference between these limits is 0.10. However, for GP2, the

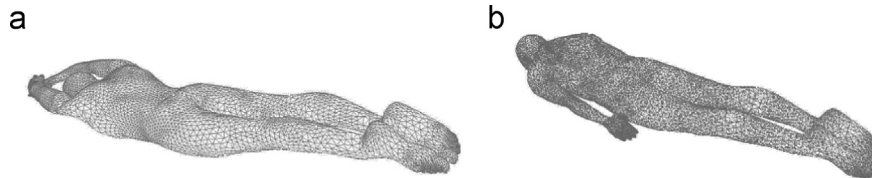


Fig. 1. Swimmer's model after its formation through surfacing and meshing software's in two respective glide positions: (a) GP1 and (b) GP2.

Table 2  
Characteristics for the model surface, turbulence and water.

|                           |        |                   |                            |
|---------------------------|--------|-------------------|----------------------------|
| Model's roughness         | 0      | Water temperature | 28 °C                      |
| Surface model's viscosity | 0.5    | Water density     | 998.2 kg m <sup>-3</sup>   |
| Turbulence                | 1%     | Water viscosity   | 0.001 kg m s <sup>-1</sup> |
| Scale of turbulence       | 0.10 m |                   |                            |

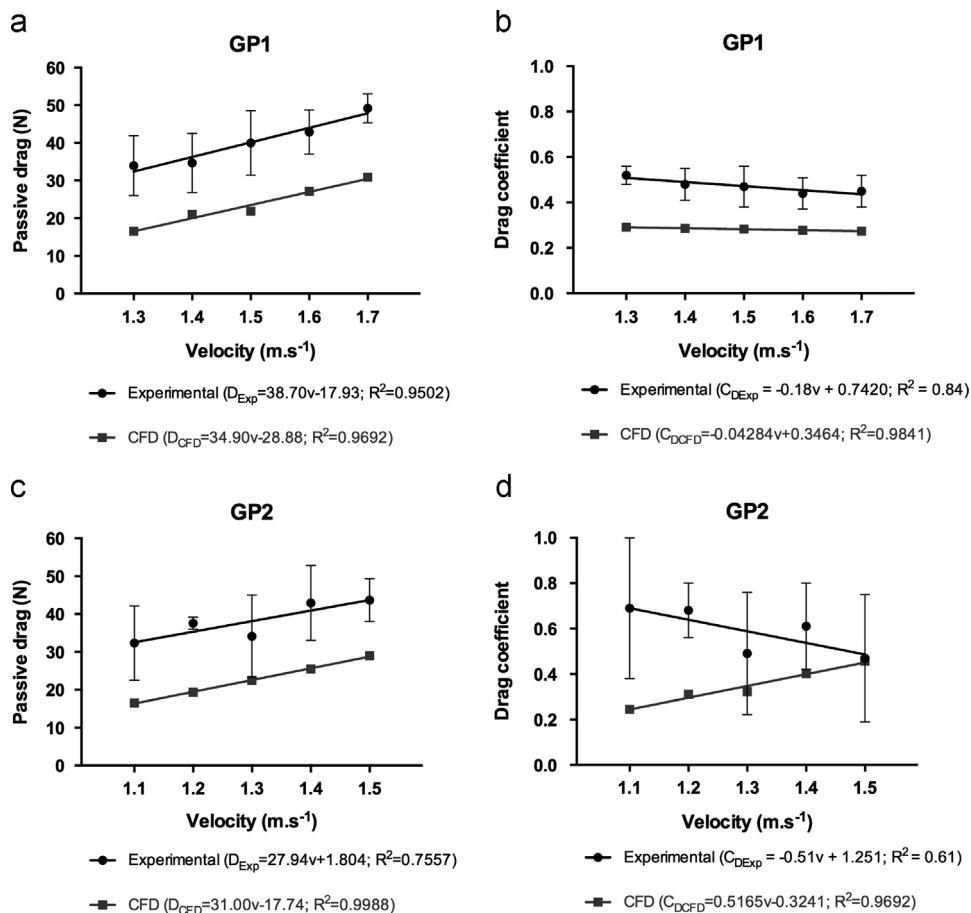
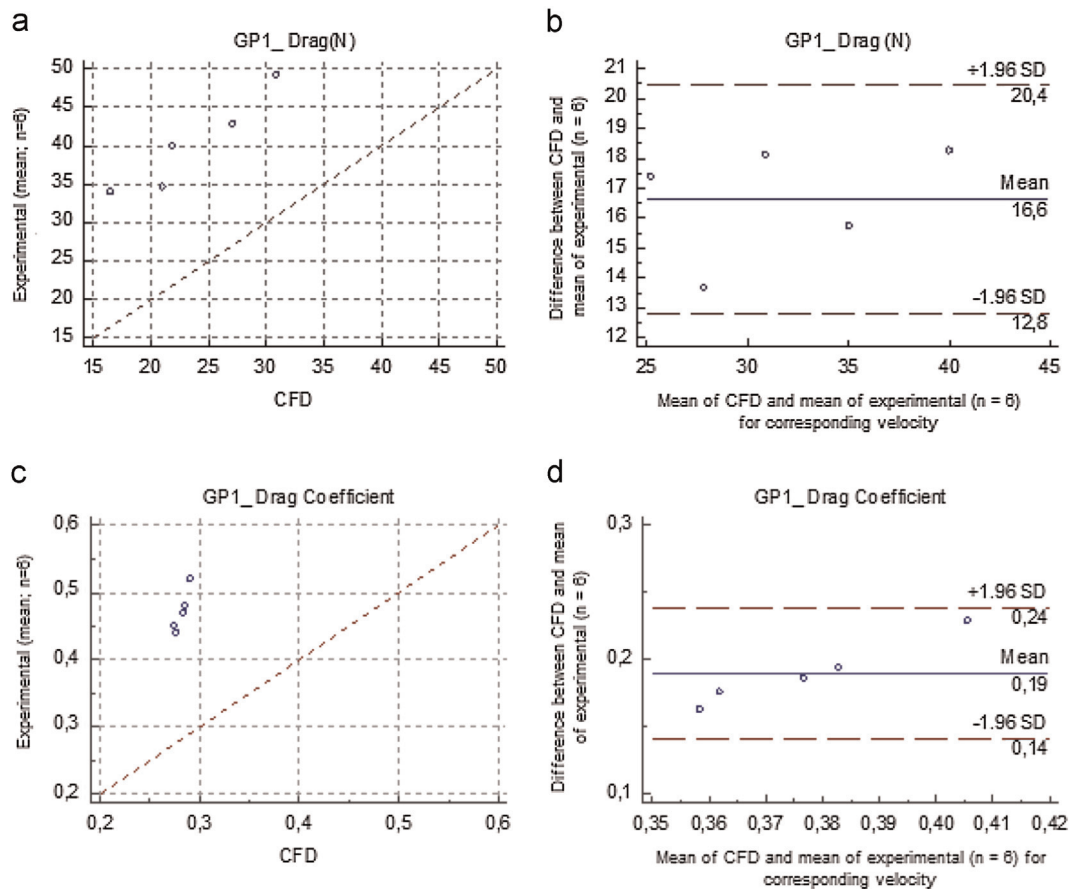


Fig. 2. Drag and drag coefficient values for GP1 (a and b, respectively) and GP2 (c and d, respectively) obtained through experimental method (mean;  $n = 6$ ) and CFD for all velocities tested.



**Fig. 3.** Correlation between experimental method and CFD in GP1 for passive drag (a), and drag coefficient values (c) for 1.30, 1.40, 1.50, 1.60 and 1.7 m/s flow velocities. Bland and Altman plot: comparing the passive drag (b) and drag coefficient values (d) obtained by inverse dynamic and CFD, in GP1 for all velocities tested.

correlation between methods is negative and moderate (Fig. 4c) and showed a difference between the  $\pm 1.96$  SD limits around mean of 0.67 (Fig. 4d). This difference is not acceptable from a biomechanical point of view. It is possible to conclude that the methods should not be considered consistent for  $C_D$  results in GP2.

## 5. Discussion

The aim of the present study was to compare experimental and CFD methods by the analysis of drag and  $C_D$  for GP1 and GP2 of the breaststroke underwater cycle, verifying if a single-model CFD simulation allows to generalise the results to a sample of swimmers. In this work a good and positive correlation of drag and  $C_D$  values was found between numerical and experimental methods for GP1. In GP2 we observed the same trend for drag; however,  $C_D$  values were not positively correlated between methods. This difference can be attributed to constraints during the experiment, measurement errors and/or errors in the CFD model characteristics. In the current study, the head position and the shoulders elevation varied during the experimental tests, while, the CFD model maintained the best streamline position throughout. It is well known that drag depends on body position (e.g. Karpovich, 1933; Marinho et al. 2009; Vilas-Boas et al., 2010), especially the position of the limbs and the head (Zaidi et al., 2008, Popa et al., 2011).

The drag underestimation produced by CFD is most likely due to a lack of precise control of the swimmer's body position during experimental situations. The current study presents similar variation characteristics as observed in past studies (Lima et al., 2006; Vilas-Boas et al., 2010; Costa et al., 2010, Marinho et al., 2009–2011). Also, the swimmer had to position himself in a more restrictive

position in GP2 than in GP1, leading to areas of high pressure gradients, particularly close to the head and shoulders (Marinho et al., 2009; Costa et al., 2010; Vilas-Boas et al., 2010; Costa et al., 2011).

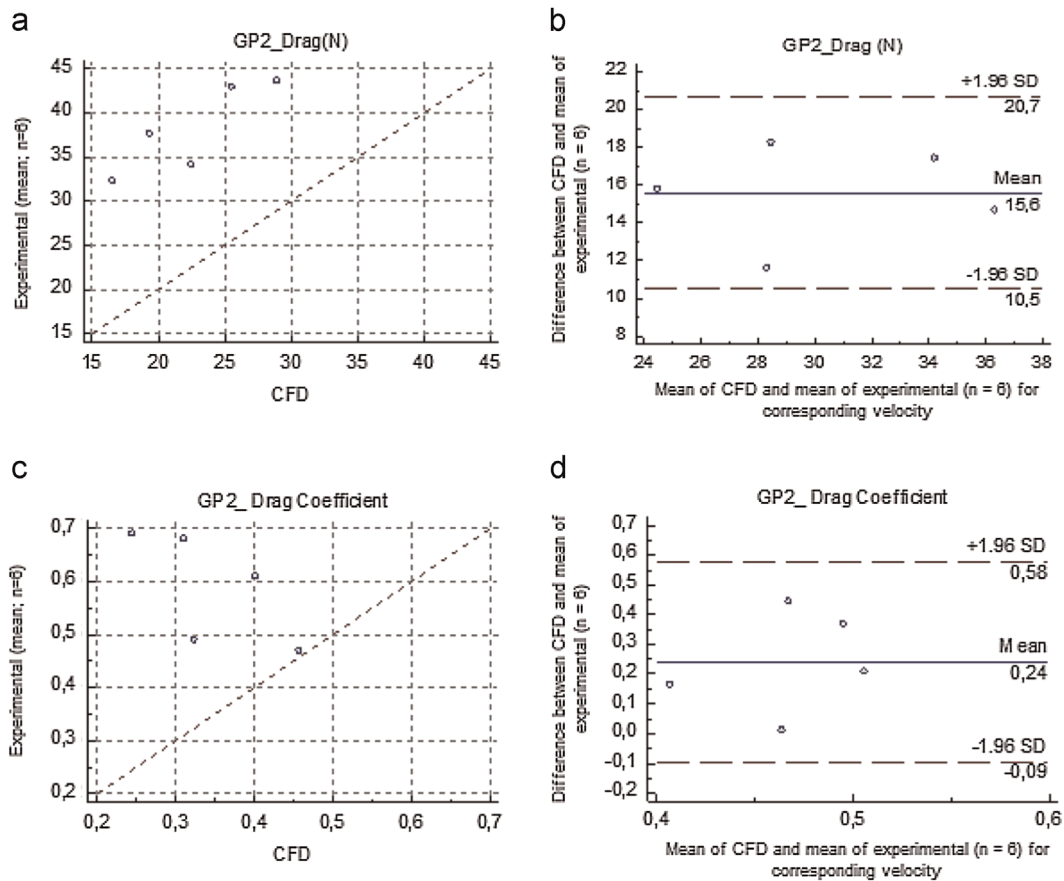
Nevertheless, since the difference between drag determination by the two methods is approximately constant (as shown by the similar line slopes in Fig. 2a and c) the CFD results can still be used to predict passive drag values for a given swimmer at a given velocity by adding a suitable constant (16.6 N for GP1, Fig. 3b; 15.6 N for GP2, Fig. 4b).

For  $C_D$  values the predictive potential of CFD single model approach is not adequate, particularly for GP2. This may be caused mainly by the referred "misalignment" of the swimmers and consequent change in  $S$  which directly implicates on the computation of  $C_D$  (Eq. (2)) while the CFD swimmer model is always the same, although being compared against several swimmers.

Therefore, we conclude that the one to one correlation of swimmer body position during experiment and CFD simulations is essential. In particular, for the experimental side, the head, limbs and body alignment affect the angle of attack and the depth of glide. Therefore, to have the CFD simulations as close as possible to the actual experimental conditions, it is necessary: (1) to control the position, alignment and orientation of the swimmer during the experimental situation; (2) or to feed the experimental position and attitude of the swimmer to the CFD simulations which is not straightforward and poses severe constraints.

It is evident from the current study that CFD method might be a good tool choice due to the offered precision, accuracy and flexibility. However, it is necessary to use individualised models and specific kinematics for the simulations.





**Fig. 4.** Correlation between experimental method and CFD in GP2 for passive drag (a) and drag coefficient values (c) for 1.10, 1.20, 1.30, 1.40 and 1.50 m/s flow velocities. Bland and Altman plot: comparing the passive drag (b) and drag coefficient values (d) obtained by inverse dynamic and CFD, for GP2 for all velocities tested.

### Conflict of interest statement

None of the authors of the above manuscript have declared any conflict of interest which may arise from being named as an author on the manuscript at present and in future.

### Acknowledgements

For the memory of Dr. Rouboa's mother: Wahbi M'Barka. Authors acknowledge swimmers and their coaches for their active participation, as well as the following FCT Grants: FRH/BD/71510/2010 and PTDC/DES/098532/2008.

### References

- Bardina, J.E., Huang, P.G., Coakley, T.J., 1997. Turbulence Modeling Validation, Testing, and Development. NASA Technical Report Memorandum, 110446. ([http://www.ewp.rpi.edu/hartford/~jongel/~19970017828\\_1997026179.pdf](http://www.ewp.rpi.edu/hartford/~jongel/~19970017828_1997026179.pdf)).
- Bixler, B., Riewalds, S., 2002. Analysis of swimmer's hand and arm in steady flow conditions using computational fluid dynamics. *J. Biomech.* 35, 713–717.
- Bixler, B., Pease, D., Fairhurst, F., 1996. The accuracy of computational fluid dynamics analysis of the passive drag of a male swimming. *Sports Biomech.* 6, 81–98.
- Bland, J.M., Altman, D.G., 1996. Measurement error. *Br. Med. J.* 312 (7047), 1654.
- Chatard, J., Lavoie, J., Bourgoin, B., Lacour, J., 1990a. The contribution of passive drag as a determinant of swimming performance. *Int. J. Sports Med.* 11, 367–372.
- Chatard, J., Lavoie, J., Bourgoin, B., Lacour, J., 1990b. Passive drag is still a good evaluator of swimming aptitude. *Eur. J. Appl. Physiol.* 59, 399–404.
- Costa, L., Ribeiro, J., Figueiredo, P., Fernandes, R.J., Marinho, D., Silva, A.J., Rouboa, A., Vilas-Boas, J.P., Machado, L., 2010. Hydrodynamic characterization of the first and second glide positions of the underwater stroke technique in breaststroke. In: Kjendlie, P.L., Stallman, R., Cabri, J. (Eds.), *Proceedings of the XIth*

- International Symposium for Biomechanics and Medicine in Swimming.* Oslo University, Norway.
- Costa, L., Ribeiro, J., Marinho, D., Mantha, V.R., Vilas-Boas, J.P., Fernandes, R.J., Silva, A.J., Rouboa, A., Machado, L., 2011. Comparing computational fluid dynamics and inverse dynamics methodologies to assess passive drag during swimming gliding. In: Soares, S., Sousa, F., Veloso, A., Vilas-Boas, J.P. (Eds.), *Programme and Abstracts Book of the 29th Conference of the International Society of Biomechanics in Sports.* Faculty of Sport: Faculty of Human Kinetics, Porto
- Councilman, J.E., 1986. *The Complete Book of Swimming.* Atheneum, New York.
- D'Acquisto, L.J., Costill, D.L., Gehtsen, G.M., Wong-Tai, Y., Lee, G., 1988. Breaststroke economy skill and performance: study of breaststroke mechanics using a computer based "velocity video". *J. Swim. Res.* 4, 9–14.
- Guimarães, A., Hay, J., 1985. A mechanical analysis of the grab starting technique in swimming. *Int. J. Sports Biomech.* 4, 25–35.
- Haljand, R., Saagpakk, R., 1984. *Swimming Competition Analysis of the European Sprint Swimming Championship in LEN.* Stavanger, Norway (unpublished article).
- Karpovich, P.V., 1933. Water Resistance in Swimming. *Res. Q.* 4, 21–28.
- Kolmogorov, S., Rumyantseva, O., Gordon, B., Cappaert, J., 1997. Hydrodynamics characteristics of competitive swimmers of different genders and performance levels. *J. Appl. Biomech.* 13, 88–97.
- Lima, A.B., Semblano, P., Fernandes, D., Gonçalves, P., Morouço, P., Sousa, F., Fernandes, R., Barbosa, T., Correia, M.V., Tani, G., Vilas-Boas, J.P., 2006. A kinematic, imagiological and acoustical biofeedback system for the technical training in breaststroke swimming. *Port. J. Sport Sci.* 22, 6322.
- Lyttle, A., Blanksby, B., Elliot, B., Lloyd, D., 1998. The effect of depth and velocity on drag during the streamlined glide. *J. Swim. Res.* 13, 15–22.
- Lyttle, A., Blanksby, B., Elliot, B., Lloyd, D., 2000. Net forces during tethered simulation of underwater streamlined gliding and kicking technique of the freestyle turn. *J. Sports Sci.* 18, 801–807.
- Maglischo, E.W., 2003. *Swimming Fastest.* Mayfield Publishing Company, Mountain View California.
- Marinho, D.A., Reis, V.M., Alves, F.B., Vilas-Boas, J.P., Machado, L., Silva, A., Rouboa, A.L., 2009. Hydrodynamic drag during gliding in swimming. *J. Appl. Biomech.* 25, 253–257.
- Marinho, D.A., Barbosa, T., Rouboa, A.L., Silva, A., 2011. The hydrodynamic study of the swimming gliding: a two-dimensional computational fluid dynamics (CFD) analysis. *J. Hum. Kinet.* 29, 49–57.

- Popa, C.V., Zaidi, H., Arfaoui, A., Polidori, G., Taiar, R., Fohanno, S., 2011. Analysis of wall shear stress around a competitive swimmer using 3D Navier–Stokes equations in CFD. *Acta Bioeng. Biomech.*, 13.
- Raiesi, H., Piomelli, U., Pollard, A., 2011. Evaluation of turbulence models using direct numerical and large-eddy simulation data. *Am. Soc. Mech. Eng. J. Fluid. Eng.* 133, 193–203.
- Rouboa, A., Silva, A., Leal, L., Rocha, J., Alves, F., 2006. The effect of swimmer's hand/forearm acceleration on propulsive forces generation using computational fluid dynamics. *J. Biomech.* 39, 1239–1248.
- Sato, Y., Hino, T., 2010. CFD simulation of flow around a swimmer in a prone glide position. *Jpn. J. Sci. Swim. Water Exerc* 13 (1), 1–9.
- Tayer, A.L., Hay, J.G., 1984. Motivating start and turn improvement. *Swim. Tech.* 204, 17–20.
- Toussaint, H.M., Roos, P.E., Kolmogorov, S., 2004. The determination of drag in front crawl swimming. *J. Biomech.* 37, 1655–1663.
- Vilas-Boas, J.P., Fernandes, R., 2003. Swimming starts and turns: determinant factors of swimming performance. In: Pelayo, P., Sydney, M. (Eds.), *Proceedings of the 3rd Day Specialized in Swimming*. Faculty of Sport Sciences and Physical Education, University of Lille, Lille, France, pp. 84–95 (in French).
- Vilas-Boas, J.P., Costa, L., Fernandes, R., Ribeiro, J., Figueiredo, P., Marinho, D., Silva, A.J., Rouboa, A.L., Machado, L., 2010. Determination of the drag coefficient during the first and second gliding positions of the breaststroke underwater. *J. Appl. Biomech.* 26, 324–331.
- Zaidi, H., Taiar, R., Fohanno, S., Polidori, G., 2008. Analysis of the effect of swimmer's head position on swimming performance using computational fluid dynamics. *J. Biomech.* 41, 1350–1358.